

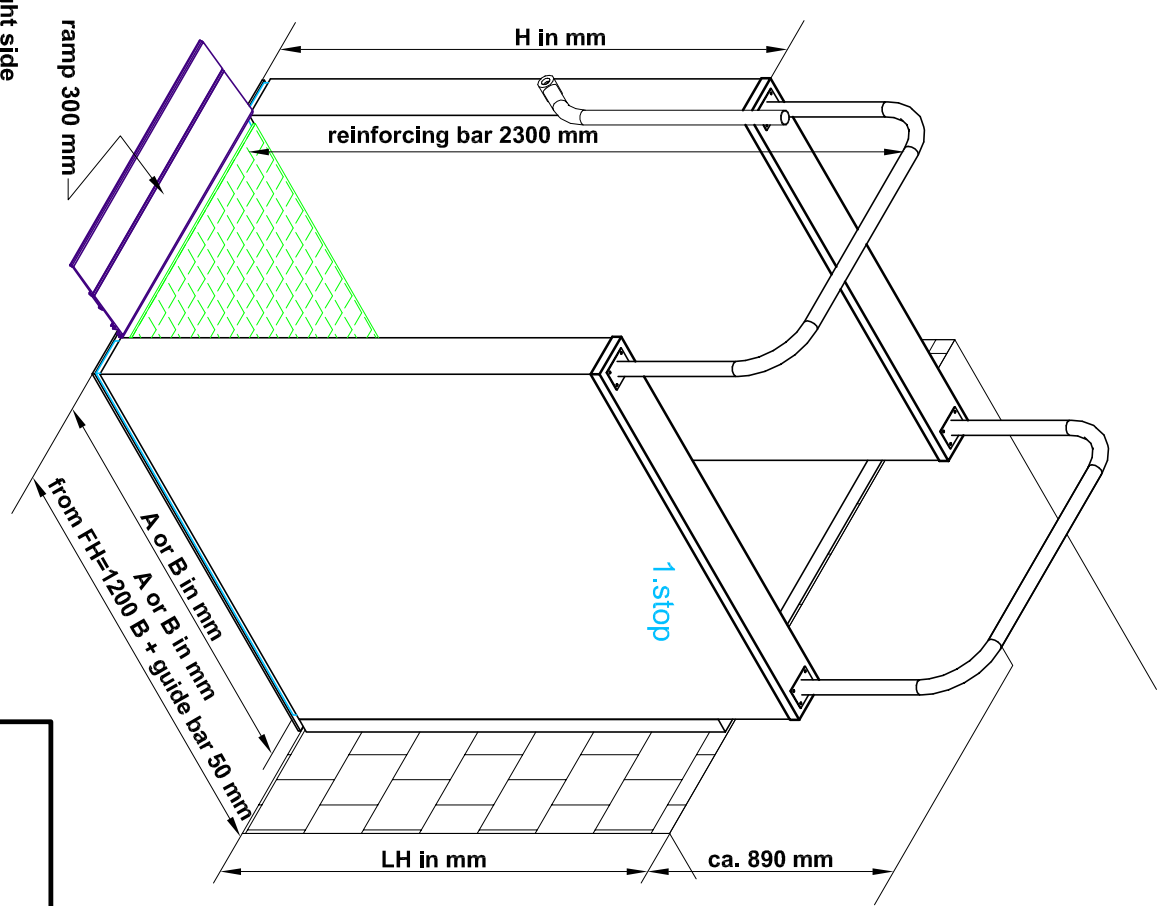
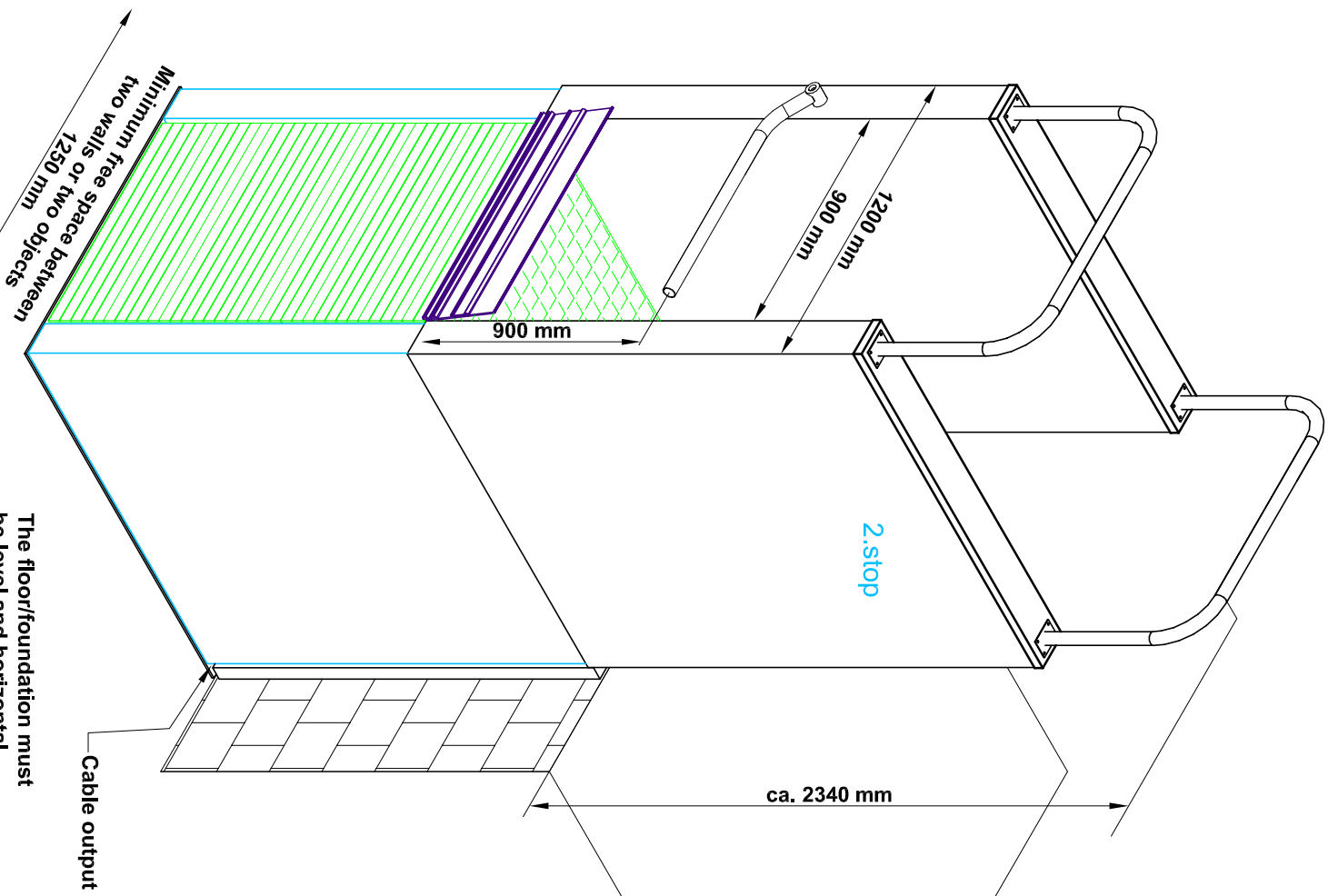
Measures for the foundation / exterior unit:

Size/mm	width B/mm	length L/mm without door	LH/mm until	with shutter guidance
1200 x 1400	1250	1800	1500	1500
1200 x 1250	1250	1650	1500	1500
1200 x 1400	1250	1750	1200	1200
1200 x 1250	1250	1600	1200	1200
1200 x 1400	1250	1750	1000	1000
1200 x 1250	1250	1600	1000	1000

The foundation must have a load-carrying capacity of 1000 kg/m² and central there must be a drain hole.

	A public	B private	H	number of reinforcing bar	height reinforcing bar/mm over ground
LH until 1000 mm	1400	1250	1285	1	1800 / ca. 890
LH until 1200 mm	1400	1250	1485	1	2000 / ca. 890
LH until 1500 mm	1400	1250	1785	2	2300 / ca. 890

With units with a LH over 1200 mm a shutter guidance is necessary.



for the private sector with reinforcing bar as anti-fall guard possible

The floor/foundation must be level and horizontal

Cable output is always on the right side

Note 1

In case of outdoor units there must be provided an empty tube 20 mm dia. with a cable 3x1.5 mm² to a plug socket places inside of the building.

Hersteller:		Hiro LIFT	
Gewicht:		Hiro LIFT	
Hebebühne HIRO 450 without door			
lifting height 1500 mm			
Name:		Wieland	
Datum:		16.02.2012	
Beauftragter:		Gepf.	
Zeichn.-Nr.:		HIRO 450	
Klass.-Nr.:		Blatt	
Zust.		Änderung	
Datum		Name	

